



Agence Immobilière Valadié

Professionnels de la transaction immobilière depuis 1960

Ref : 7628

• House - Beaumontois en Périgord •



DETAILS

Land surface: 3750 m²

Number of bedrooms: 4

Number of levels: 1

Type of heating: Electric

Drainage/sewage: Septic tank

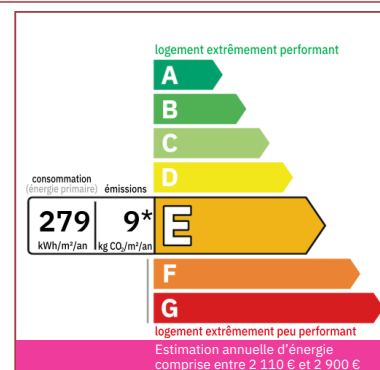
Swimming pool: No

Ground floor living: No

Work needed: No work

Fireplace: Yes closed hearth

Built: 1940



Between Villeréal and Beaumontois-en-Périgord. A Perigord-style house with two separate dwellings. 2 adjoining barns. Land all around.

147 m² living

3 750 m²

- Villeréal -

17 place de la Halle

47210 Villeréal

Tel : 05 53 36 08 27

villereal@valadie-immobilier.com

Price fees included

160 500 €

Agency fees: 7 % VAT included*

Price without fees: 150 000 €

*The agency fees are entirely at the cost of the purchaser



Agence Immobilière Valadié

Professionnels de la transaction immobilière depuis 1960

• Description ref n°7628 •

A Périgord-style house with two independent dwellings:
Dwelling No. 1 comprising:

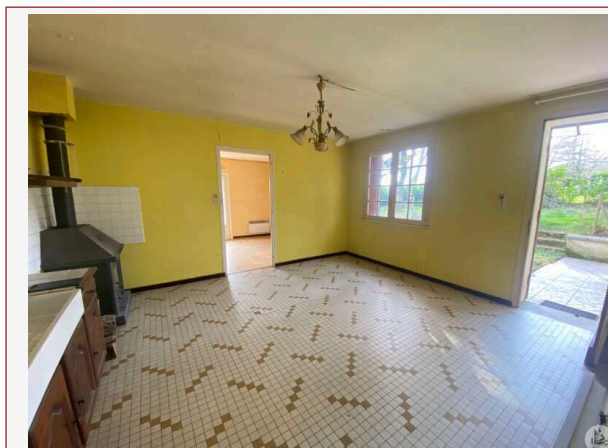
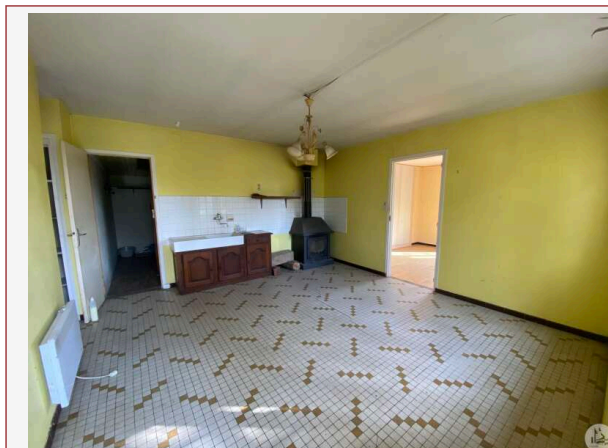
- Access via a tiled terrace,
- An entrance to a kitchen of approximately 18.4 m², tiled floor,
- A living room of approximately 17.4 m², laminate flooring, a double-glazed PVC French window, wallpapered walls.
- A hallway of approximately 1.5 m², tiled floor with cupboards.
- A bedroom of approximately 11.5 m², linoleum floor on concrete screed,
- A shower room of approximately 3.4 m², tiled floor, earthenware, a sink, a bathtub, toilet, wallpapered ceiling.
- Access to a floor with a hallway of approximately 7.7 m² with the water heater.
- A hallway of approximately 2.9 m²,
- A bedroom of approximately 9 m², linoleum floor, a skylight, sloping ceiling.
- A bedroom of approximately 13.3 m² with sloping ceilings, a skylight.
- An attic of approximately 19.2 m².

Additional information:

- Wooden joinery with single glazing and shutters except for the one in the living room.
- Electric heating.

Accommodation no. 2 comprising:

- An entrance to the kitchen/dining room of approximately 17.6 m², tiled floor, with a fireplace with a wood stove, exposed beams, PVC paneling on the ceiling, a French window.
- A hallway of approximately 2.3 m², tiled floor,
- A bedroom of approximately 10.4 m², tiled floor, wallpaper on the walls, paneling on the ceiling.
- A bedroom of approximately 16.2 m², tiled floor, paneling on the ceiling,
- A storage room of approximately 6.4 m², linoleum on the floor
- A second hallway of approximately 5.7 m² in an L shape, a door leading outside.
- A shower room of approximately 3.7 m², tiled floor, a toilet, sink, shower.



Additional information: